

## Appendix 5

### Summary analysis of Pupil Survey

A pupil survey was distributed to all schools in Cardiff, asking pupils to consider what is important to them. Pupils were asked to score the following questions (from 0-10):

- How important is it for pupils to attend the same school as their older brother/sister?
- How important is it for pupils to attend the same Secondary school as friends and other pupils from their primary school
- How important is it for pupils to attend a school close to home?
- How important is it for pupils with additional learning needs to have priority for admission over other children?

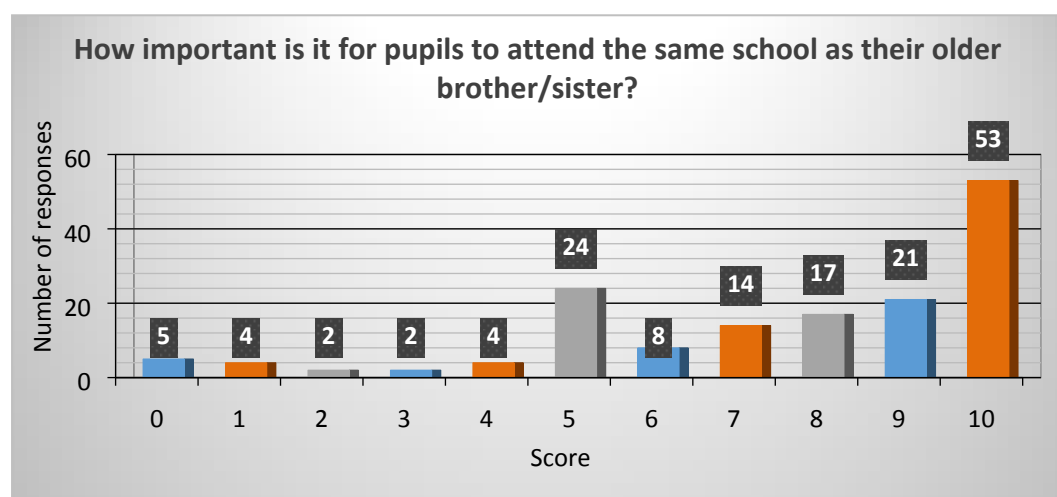
413 online responses were submitted, including 158 responses from Year 4, 5 and 6 primary school pupils and 255 from Year 7, 8, 9 and 10 secondary school pupils.

#### Primary school pupils

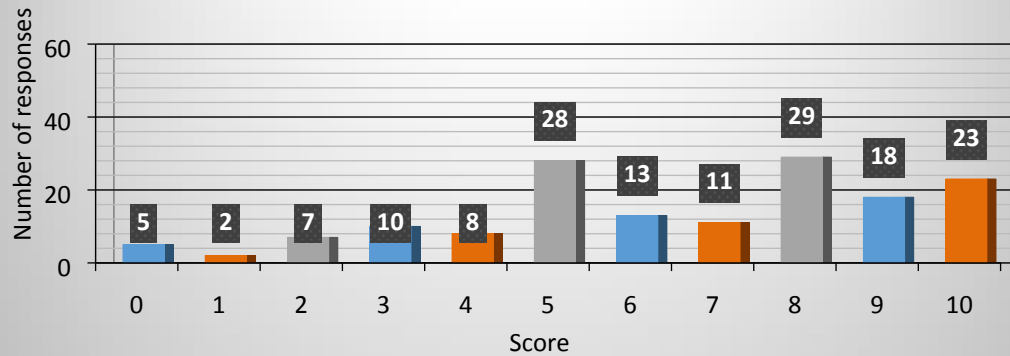
Average Scores for primary school pupils were as follows:

How important is it for pupils to attend the same school as their older brother/sister?	How important is it for pupils to attend the same Secondary school as friends and other pupils from their primary school?	How important is it for pupils to attend a school close to home	How important is it for pupils with additional learning needs to have priority for admission over other children?
7.47	6.61	7.52	6.89

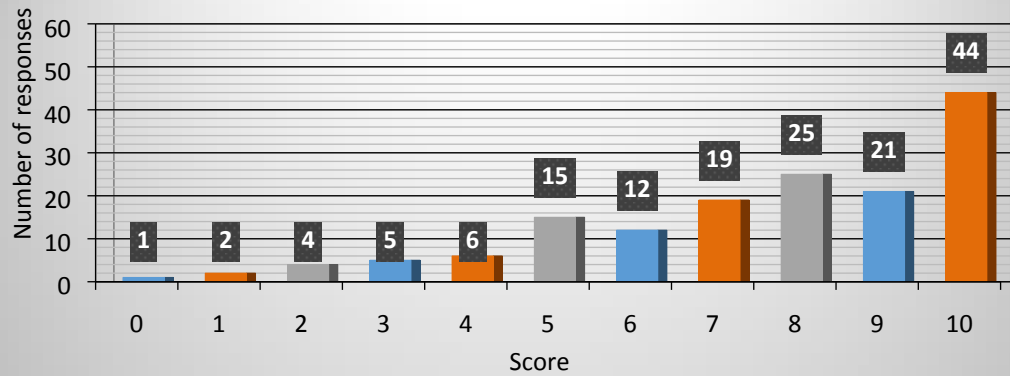
The distribution of pupils scores is displayed in the tables below:



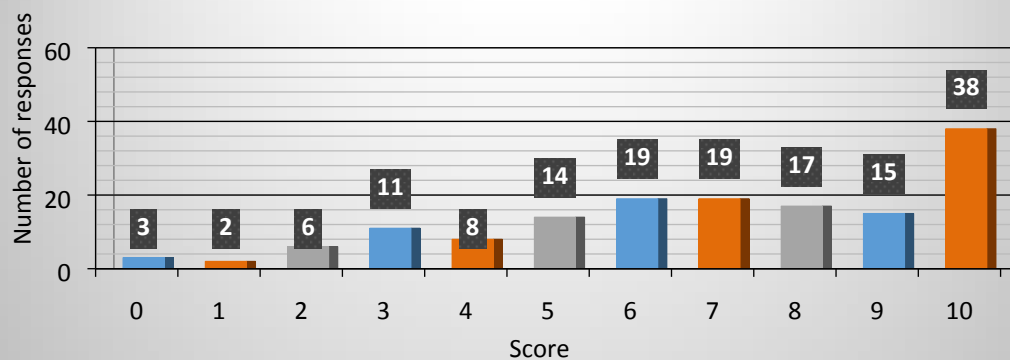
**How important is it for pupils to attend the same Secondary school as friends and other pupils from their primary school?**



**How important is it for pupils to attend a school close to home**



**How important is it for pupils with additional learning needs to have priority for admission over other children?**

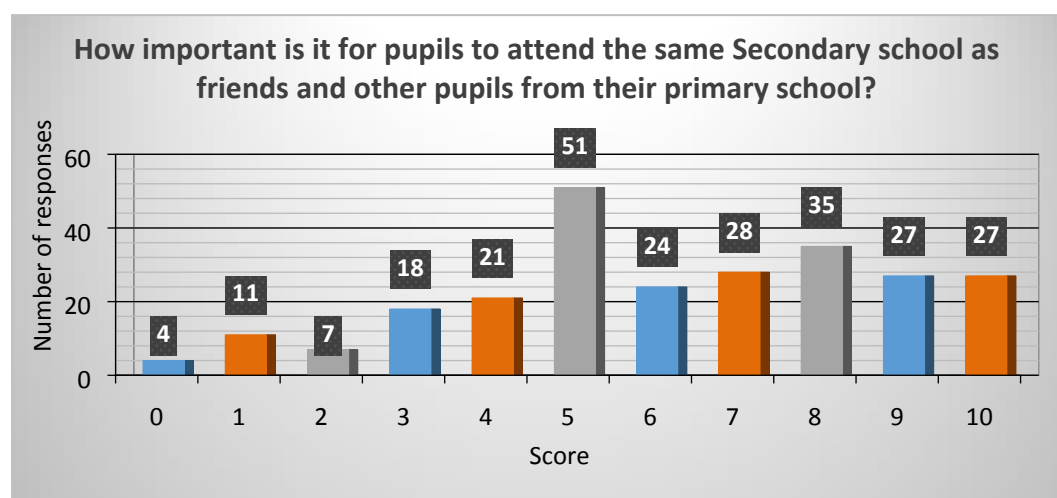
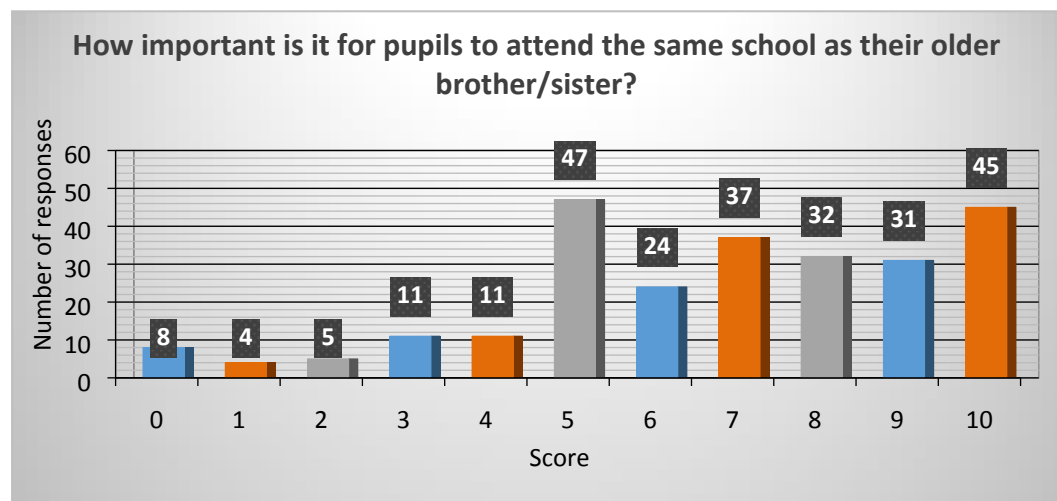


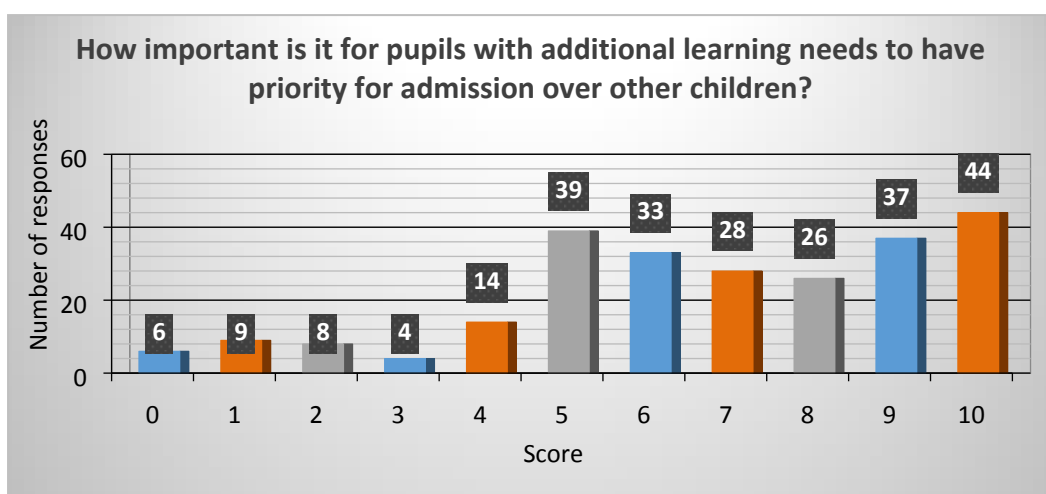
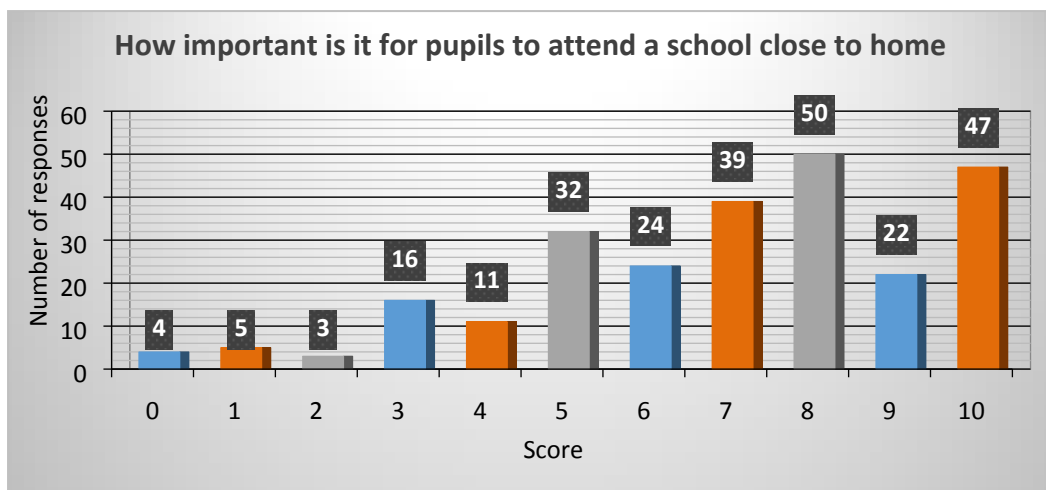
## Secondary school pupils

Average Scores for secondary school pupils were as follows:

How important is it for pupils to attend the same school as their older brother/sister?	How important is it for pupils to attend the same Secondary school as friends and other pupils from their primary school?	How important is it for pupils to attend a school close to home	How important is it for pupils with additional learning needs to have priority for admission over other children?
6.73	6.13	6.86	6.71

The distribution of pupils scores is displayed in the below table:





#### Summary findings:

Primary age pupils considered that attendance at a school close to home was most important (average importance score 7.52), and attending the same secondary school as friends and other pupils from their primary school as least important (average importance score 6.61)

Secondary age pupils considered that attendance at a school close to home was most important (average importance score 6.86), and attending the same secondary school as friends and other pupils from their primary school as least important (average importance score 6.13)